



Catalog for Plastic Welding  
**2025**



*Welding & Piping*

  
**WELPING**

**FUSING** 

Innovative and reliable high quality fusion welding tools and machines  
for the jobs on construction sites all around the globe

[welpingfusion.com](http://welpingfusion.com)  
[welpingtool.com](http://welpingtool.com)

# Table of Contents



## FX series

Premium line of butt fusion machines, with DynaFX hydraulic system

**P1-P5**



## Apro series

Updated model of the classical A series performance and cost balancing

**P6-P11**



## Large-size machines

Model: WP1400A, WP1600A  
WP1800A, WP2000A

**P13-P15**

Hydraulic butt welding **A series**  
The classical models of fusion machines

16

Hydraulic butt welding **Al series**  
Fusion machines in Inch sizes

20

Hydraulic butt welding **B series**  
The economical models of fusion machines

22

Automatic butt welding **Q series**  
Smart fusion welding with full automation

24

Manual butt welding **C series**  
Smooth and precise gear-driven mechanism

25

Electrofusion welding **K series**  
From 20mm, up to 1000mm

26

Socket fusion welder **FX series**  
Premium socket fusion tools for PPR piping

27

Plastic extrusion welder  
Booster EX2, EX3, WP40H

29

Accessories & Tools  
Various supporting tools for fusion welding

31

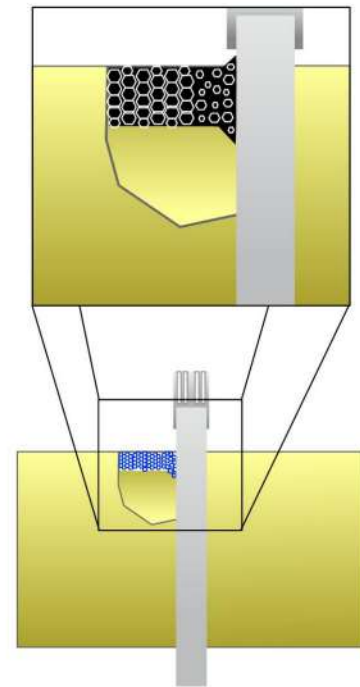
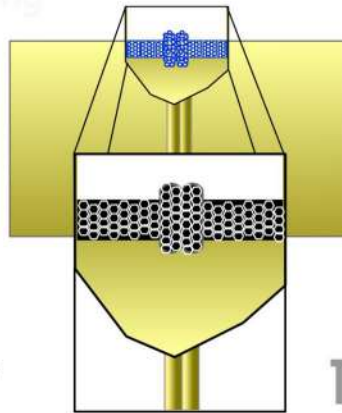
# The Theory of Heat Fusion

The pipe fusion process associated with Welping butt fusion machines is a widely accepted process that joins two pieces of thermoplastic pipe or pipe fitting together with heat and pressure. While commonly associated with high-density polyethylene pipe (HDPE), our machines are capable of fusing (or welding) a variety of different types and sizes of pipe including medium-density polyethylene (MDPE), polypropylene and polypropylene-random (PP-R).

Welding & Piping

## PRINCIPLES OF HEAT FUSION

Heating two surfaces to a designated temperature and then joining them by applying force. This process generates pressure, leading to the flow and intermingling of the melted materials, which results in fusion. When a thermoplastic pipe is heated, its molecular structure shifts from a crystalline state to an amorphous state. Upon applying fusion pressure the molecules from each pipe end blend together.



## THE RESULT OF HEAT FUSION

As the joint cools, the molecules revert to their original state, eliminating the initial interfaces and resulting in a single, seamless pipe.

## WHY USE BUTT FUSED PIPE?

HEAT-FUSED THERMOPLASTIC PIPE HAS MANY BENEFITS OVER TRADITIONAL PIPING SYSTEMS

WELPING  
Welding & Piping



SEAMLESS

Fused thermoplastic pipes form a monolithic pipeline with fewer mechanical transitions, reducing the likelihood of leaks.



Long Life

Thermoplastic pipes, such as HDPE, are expected to last up to 50-80 years, thereby saving on replacement costs.



Cost-efficient

Heat-fused pipelines create leak-free systems, reduce the need for maintenance or repairs, and conserve resources.



Corrosion resistant

Thermoplastic pipes do not rust or corrode and are resistant to chemical abrasion.



TOUGH

Thermoplastic pipes can withstand common damages, vibrations, and pressure surges.



**1** Pipe Clamping

Clamp the pipe or fitting securely, align it axially and horizontally, and get ready for the next steps



**2** Pipe Facing

The pipe ends are faced to create clean, parallel surfaces perpendicular to the centerline



**3** Pipe Heating

To heat the pipe or fitting ends to melted condition for jointing later



**4** Pipe Fusing

Join the molten pipe ends under steady pressure until the joint cools



# FX

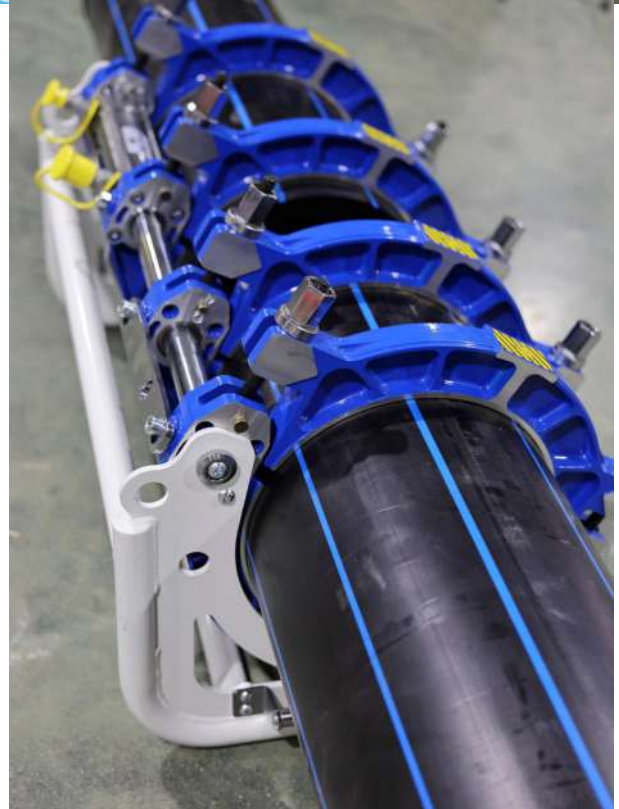
# FOR PROFESSIONALS

## Smart Pressure

The FX series hydraulic unit features an advanced hydraulic design, with a refined appearance and efficient, user-friendly operation.

The unique 'Release' button instantly reduces the pressure to the pipe milling level, enabling quick pressure relief for efficient pipe ends milling.

Featuring forward movement at 1X speed and reverse at 1.3X speed. Improves efficiency and reduces switching time.



## Robust Frame

The frame is fully welded from high-strength steel, ensuring excellent durability and resistance to deformation, even under harsh working conditions.



# Flexibility & Reliability

The clamp inserts are designed to cover a wide range of pipe sizes, significantly reducing the need for multiple insert combinations.

For example, a large span from 90mm to 315mm requires only three sets of inserts, greatly improving work efficiency.

Meanwhile, the inserts feature a high-strength structure, pressure-cast for durability, making them suitable for heavy-duty applications.



## Available with

Model	FX160	FX200	FX250	FX315
Welding range (mm)	40-160	63-200	63-250	90-315
Standard reducers (mm)	40-50-63-75-90-110	63-75-90-110-125-140	63-75-90-110-125-140	90-110-125-140-160-180
	-125-140-160(M)	-160-180-200(M)	-160-180-200-225-250(M)	-200-225-250-280-315(M)
Power supply	220V/50Hz, 1PH	220V/50Hz, 1PH	220V/50Hz, 1PH	220V/50Hz, 1PH
Total power	3.65 KW	3.95 KW	5.05 KW	5.85 KW
Heating plate	1.5 KW	1.8 KW	2.3 KW	3.1 KW
Facer	1.4 KW	1.4 KW	2.0 KW	2.0 KW
Hydraulic station	0.75 KW	0.75 KW	0.75 KW	0.75 KW
Pressure adjusting range	0-8 MPa	0-8 MPa	0-8 MPa	0-8MPa
Max Temperature	270°C	270°C	270°C	270°C
Temperature Deviation	±5°C	±5°C	±5°C	±5°C
Piston Area	15.32 CM <sup>2</sup>	15.32 CM <sup>2</sup>	11 CM <sup>2</sup>	20.02 CM <sup>2</sup>



# Single Size Clamp Inserts

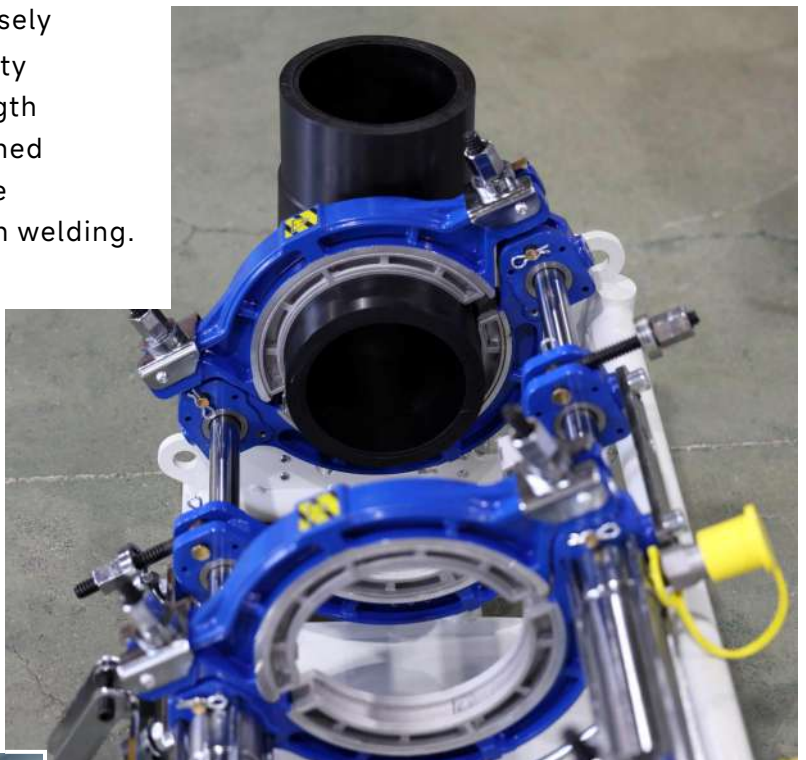
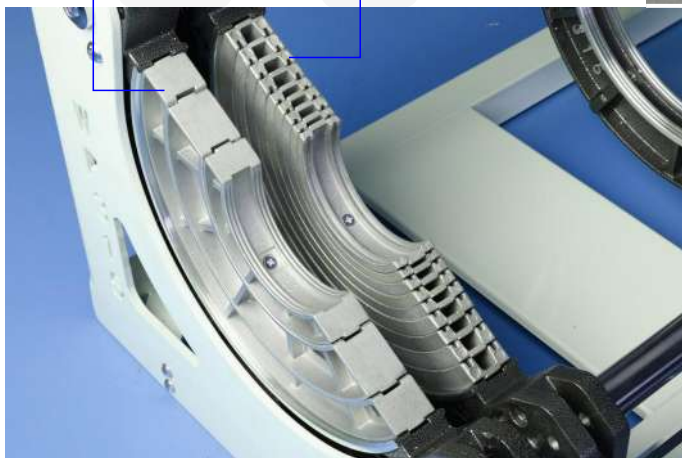
**W**elping's single-size clamp inserts are precisely engineered and manufactured from high-quality aluminum die-casting, offering superior strength and dimensional stability. Each insert is designed for a specific pipe diameter, ensuring accurate centering and firm clamping during butt fusion welding.

**Q**uick installation: Single-piece structure ensures easy handling and reliable alignment, greatly reducing the stacking quantity of the clamp inserts.

**C**ompatible with FX Series, A Pro Series, A Series, and C Series fusion machines, 160mm, 200mm, 250mm and 315mm

**Single-size type**

**Normal type**



**A**vailable with

90-315mm	3-layer insert combination
63-250mm	3-layer insert combination
63-200mm	2-layer insert combination
50-160mm	Single-size insert
40-160mm	2-layer insert combination

\*Support customization of specific sizes



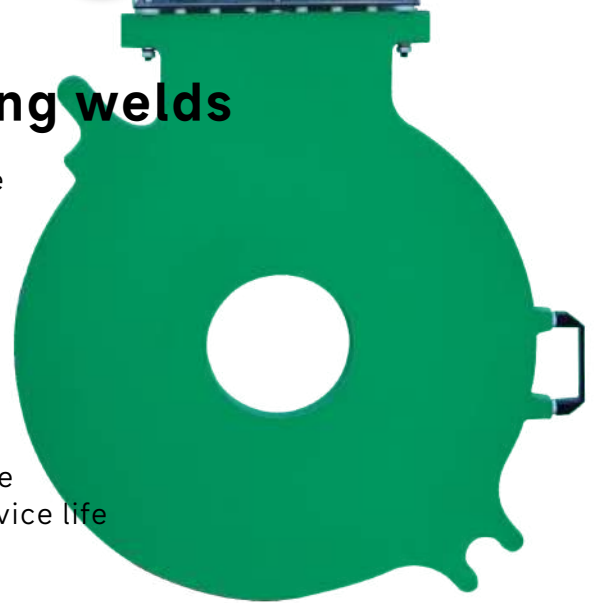
# FX Heating plate

## Excellent heating for demanding welds

Designed for professional-grade butt fusion welding, the FusingX premium heating plate features:

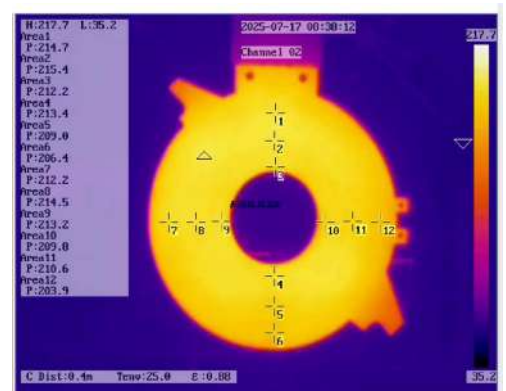
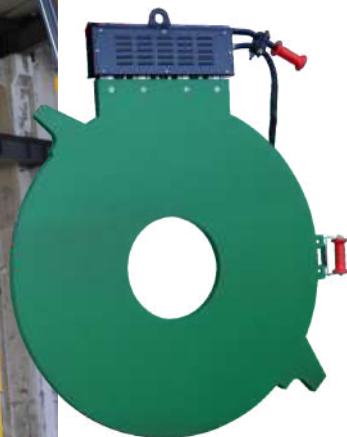
Thicker cast aluminum body with optimized internal heating elements ensures rapid warm-up and uniform heat distribution. Effectively controls temperature deviation to ensure uniform heating, laying the foundation for high-quality fusion joints.

Coated with Daikin PEFT non-stick finish to resist residue and oxidation, making cleaning easier and extending service life



## Choice for professionals

Standard for FX series fusion machines  
 Optional for A pro and A series fusion machines  
 Size available with 160mm up to 2250mm,  
 supports customization





# FOR PROFESSIONALS

Model	FX 355	FX 400	FX 450	FX 500
Welding range (mm)	90-355	180-400	180-450	180-450
Standard reducers (mm)	90-110-125-140-160-180-200 -225-250-280-315-355(M)	180-200-225-250-280 -315-355-400(M)	180-200-225-250-280 -315-355-400-450(M)	180-200-225-250-280 -315-355-400-450-500(M)
Power supply	220V/50Hz, 1PH	380V/50Hz, 3PH	380V/50Hz, 3PH	380V/50Hz, 3PH
Total power	6.35 KW	8.7 KW	8.7 KW	9.1 KW
Heating plate	3.6 KW	6.5 KW	6.5 KW	6.5 KW
Facer	2.0 KW	1.1 KW	1.1 KW	1.5 KW
Hydraulic station	0.75 KW	1.1 KW	1.1 KW	1.1 KW
Pressure adjusting range	0-8 MPa	0-10 MPa	0-10 MPa	0-10 MPa
Max Temperature	270°C	270°C	270°C	270°C
Temperature Deviation	±5°C	±7°C	±7°C	±7°C
Piston Area	20.02 CM <sup>2</sup>	22.38 CM <sup>2</sup>	22.38 CM <sup>2</sup>	22.38 CM <sup>2</sup>

Model	FX 630	FX 800	FX 1000	FX 1200
Welding range (mm)	315-630	500-800	630-1000	630-1200
Standard reducers (mm)	315-355-400-450-500 -560-630(M)	450-500-560-630 -710-800(M)	630-710-800 -900-1000(M)	630-710-800-900 -1000-1100-1200(M)
Power supply	380V/50Hz, 1PH	380V/50Hz, 3PH	380V/50Hz, 3PH	380V/50Hz, 3PH
Total power	10.1 KW	16.2 KW	24.5 KW	30.5 KW
Heating plate	7.5 KW	12.5 KW	17.5 KW	22.5 KW
Facer	1.5 KW	2.2 KW	3 KW	4 KW
Hydraulic station	1.1 KW	1.5 KW	4 KW	4 KW
Pressure adjusting range	0-10 MPa	0-10 MPa	0-12 MPa	0-12 MPa
Max Temperature	270°C	270°C	270°C	270°C
Temperature Deviation	±7°C	±7°C	±7°C	±7°C
Piston Area	27.1 CM <sup>2</sup>	31.8 CM <sup>2</sup>	36.52 CM <sup>2</sup>	45.94 CM <sup>2</sup>





# Pro Performance



## Heavy-duty FRAME

- Complete reinforced welded steel structure, strong, free of distortion
- Aluminum strengthened clamping part with anti-friction pads
- Qualified hydraulic cylinder with quick couplings, for easy installation

# A PRO



# Pro Reliability

## Reliable Facing Tool

Gear-driven structure adopted across the full size range from 160mm to 630mm

Sizes 800mm to 1200mm, both gear transmission and heavy-duty self-tensioning chain systems are available

Flexible coupling design delivers smoother rotation, reduced vibration, and longer motor life

Reinforced cutter plates designed for long-term stability under heavy-duty use





# Pro Control

## Classical design

Continuing the classic exterior design of the A Series hydraulic station, the A Pro version features upgraded electrical components and pressure gauge for a more stable and efficient operating experience

Integrated hydraulic and electrical control. All-in-one control panel: hydraulic actuation, pressure setting, timing, electric info display, temperature setting

Enclosure design, shielding splash and dirt and wheels (for sizes above 355mm), for easy transportation



Page 16 for details

## Optional data logger

Records welding temperature, pressure, and time for quality control.

Provides welding parameters for reference.

Ensures compliance with international standards



# A Pro 160-315



## Available with

Model	WP160Apro	WP200Apro	WP250Apro	WP315Apro
Welding range (mm)	40-160	63-200	63-250	90-315
Standard reducers (mm)	40-50-63-75-90-110	63-75-90-110-125-140	63-75-90-110-125-140	90-110-125-140-160-180
	-125-140-160(M)	-160-180-200(M)	-160-180-200-225-250(M)	-200-225-250-280-315(M)
Power supply	220V/50Hz, 1PH	220V/50Hz, 1PH	220V/50Hz, 1PH	220V/50Hz, 1PH
Total power	3.65 KW	3.95 KW	5.05 KW	5.85 KW
Heating plate	1.5 KW	1.8 KW	2.3 KW	3.1 KW
Facer	1.4 KW	1.4 KW	2.0 KW	2.0 KW
Hydraulic station	0.75 KW	0.75 KW	0.75 KW	0.75 KW
Pressure adjusting range	0-8 MPa	0-8 MPa	0-8 MPa	0-8MPa
Max Temperature	270°C	270°C	270°C	270°C
Temperature Deviation	±5°C	±5°C	±5°C	±5°C
Piston Area	15.32 CM <sup>2</sup>	15.32 CM <sup>2</sup>	11 CM <sup>2</sup>	20.02 CM <sup>2</sup>



# A Pro 355-500



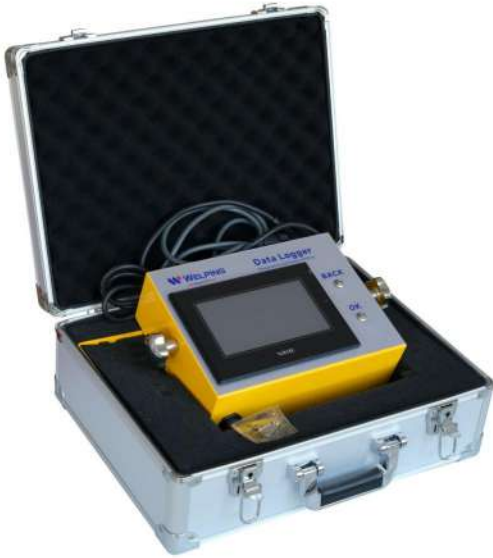
Model	WP355Apro	WP400Apro	WP450Apro	WP500Apro
Welding range (mm)	90-355	180-400	180-450	180-500
Standard reducers (mm)	90-110-125-140-160-180-200 -225-250-280-315-355(M)	180-200-225-250-280 -315-355-400(M)	180-200-225-250-280 -315-355-400-450(M)	180-200-225-250-280 -315-355-400-450-500(M)
Power supply	220V/50Hz, 1PH	380V/50Hz, 3PH	380V/50Hz, 3PH	380V/50Hz, 3PH
Total power	6.35 KW	8.7 KW	8.7 KW	9.1 KW
Heating plate	3.6 KW	6.5 KW	6.5 KW	6.5 KW
Facer	2.0 KW	1.1 KW	1.1 KW	1.5 KW
Hydraulic station	0.75 KW	1.1 KW	1.1 KW	1.1 KW
Pressure adjusting range	0-8 MPa	0-10 MPa	0-10 MPa	0-10 MPa
Max Temperature	270°C	270°C	270°C	270°C
Temperature Deviation	±5°C	±7°C	±7°C	±7°C
Piston Area	20.02 CM <sup>2</sup>	22.38 CM <sup>2</sup>	22.38 CM <sup>2</sup>	22.38 CM <sup>2</sup>



Model	WP630Apro	WP800Apro	WP1000Apro	WP1200Apro
Welding range (mm)	315-630	500-800	630-1000	630-1200
Standard reducers (mm)	315-355-400-450-500	500-560-630	630-710-800	630-710-800-900
	-560-630(M)	-710-800(M)	-900-1000(M)	-1000-1100-1200(M)
Power supply	380V/50Hz, 1PH	380V/50Hz, 3PH	380V/50Hz, 3PH	380V/50Hz, 3PH
Total power	10.1 KW	16.2 KW	24.5 KW	30.5 KW
Heating plate	7.5 KW	12.5 KW	17.5 KW	22.5 KW
Facer	1.5 KW	2.2 KW	3 KW	4 KW
Hydraulic station	1.1 KW	1.5 KW	4 KW	4 KW
Pressure adjusting range	0-10 MPa	0-10 MPa	0-12 MPa	0-12 MPa
Max Temperature	270°C	270°C	270°C	270°C
Temperature Deviation	±7°C	±7°C	±7°C	±7°C
Piston Area	27.1 CM <sup>2</sup>	31.8 CM <sup>2</sup>	36.52 CM <sup>2</sup>	45.94 CM <sup>2</sup>

# Data Logger

For butt fusion welding machine



The Data Logger is specifically designed for butt fusion welding machines, ensuring reliable recording and monitoring of welding processes. It accurately sets and captures essential welding parameters, for quality control and compliance purposes.

1. Preloaded major welding standard ( ISO, DVS)
2. Memory of 500 records
3. Built-in USB port for Welding Reports exportation
4. Built-in printer, the welding report can be printed directly
5. Language in English, Russian and Chinese

Applicable to butt fusion welding machines, used for welding short pipes and fittings  
Suitable for the entire range of welding machines,  
Steel panel with precise laser cutting and welding  
Sizes are available with: 160mm up to 2250mm  
customizable upon request



# Stub end devices





# Large-size Series

## For Heavy-duty jobs

For water transmission, power plant cooling lines, mining projects, marine intakes, and large-scale infrastructure construction

The frame is fully welded from high-strength steel, ensuring excellent durability and resistance to deformation, even under harsh working conditions. Supports non-standard pipe sizes and special clamps for structured-wall pipes such as Carat pipe

Heavy-duty facing tool and custom-designed heating plates are built to meet the demands of high-load and long-duration jobs

Available with sizes: 1400mm, 1600mm, 1800mm, 2000mm, 2250mm, 2500mm and more, customization upon requests



**Heavy-duty pipe roller stands**



# Large-size Series



Model	WP1400A	WP1600A	WP1800A	WP2000A
Welding range (mm)	1000-1400	1000-1600	1200-1800	1600-2000
Standard reducers (mm)	1000-1200-1400(M)	1000-1200-1400-1600(M)	1200-1400-1600-1800(M)	1600-1800-2000(M)
Power supply	380V/50Hz, 3PH	380V/50Hz, 3PH	380V/50Hz, 3PH	380V/50Hz, 3PH
Total power	49.5 KW	61.5 KW	78 KW	94.7 KW
Heating plate	40 KW	50 KW	65 KW	80 KW
Planing tool	5.5 KW	7.5 KW	7.5 KW	9.2 KW
Hydraulic station	4 KW	4 KW	5.5 KW	5.5 KW
Pressure adjusting range	0-16 MPa	0-16MPa	0-16MPa	0-16MPa
MaxTemperature of heating plate	270°C	270°C	270°C	270°C
Temperature Deviation	±10°C	±10°C	±10°C	±10°C

# Pipe Roller Stand

For HDPE pipe



Designed to complement large-diameter butt fusion machines, our heavy-duty roller pipe stands provide essential support for handling and aligning HDPE pipes during the welding process



Model / Size	Pipe Size	Load Capacity
1800RS	800-1800mm	5000kg
3000RS	1000-3000mm	10000kg

\*Customization up request

Specially designed for large-diameter fusion machines, this optional hydraulic crane provides a reliable and labor-saving solution for mounting and removing heavy components such as the facer and heating plate



**Multi-Section Telescopic Structure:**  
Compact when stored, extended when in use – flexible for various jobsite space

**Integrated Installation:**  
Firmly mounted to the machine frame for enhanced stability and easy deployment

**Essential for Large Sizes:**  
Strongly recommended for Ø1400mm and above machines

# Hydraulic Crane

For Large-size fusion machines



# A series 160-315



Model	WP160A	WP200A	WP250A	WP315A
Welding range (mm)	63-160	63-200	90-250	90-315
Standard reducers (mm)	63-75-90-110	63-75-90-110-125-140	90-110-125-140	90-110-125-140-160-180
	-125-140-160(M)	-160-180-200(M)	-160-180-200-225-250(M)	-200-225-250-280-315(M)
Power supply	220V/50Hz, 1PH	220V/50Hz, 1PH	220V/50Hz, 1PH	220V/50Hz, 1PH
Total power	3.65 KW	3.95 KW	5.05 KW	5.85 KW
Heating plate	1.5 KW	1.8 KW	2.3 KW	3.1 KW
Facer	1.4 KW	1.4 KW	2.0 KW	2.0 KW
Hydraulic station	0.75 KW	0.75 KW	0.75 KW	0.75 KW
Pressure adjusting range	0-8 MPa	0-8 MPa	0-8 MPa	0-8MPa
Max Temperature	270°C	270°C	270°C	270°C
Temperature Deviation	±5°C	±5°C	±5°C	±5°C
Piston Area	15.32 CM <sup>2</sup>	15.32 CM <sup>2</sup>	11 CM <sup>2</sup>	20.02 CM <sup>2</sup>



Model	WP355A	WP400A	WP450A	WP500A
Welding range (mm)	90-355	180-400	180-450	180-500
Standard reducers (mm)	90-110-125-140-160-180-200 -225-250-280-315-355(M)	180-200-225-250-280 -315-355-400(M)	180-200-225-250-280 -315-355-400-450(M)	180-200-225-250-280 -315-355-400-450-500(M)
Power supply	220V/50Hz, 1PH	380V/50Hz, 3PH	380V/50Hz, 3PH	380V/50Hz, 3PH
Total power	6.35 KW	8.7 KW	8.7 KW	9.1 KW
Heating plate	3.6 KW	6.5 KW	6.5 KW	6.5 KW
Facer	2.0 KW	1.1 KW	1.1 KW	1.5 KW
Hydraulic station	0.75 KW	1.1 KW	1.1 KW	1.1 KW
Pressure adjusting range	0-8 MPa	0-10 MPa	0-10 MPa	0-10 MPa
Max Temperature	270°C	270°C	270°C	270°C
Temperature Deviation	±5°C	±7°C	±7°C	±7°C
Piston Area	20.02 CM <sup>2</sup>	22.38 CM <sup>2</sup>	22.38 CM <sup>2</sup>	22.38 CM <sup>2</sup>

# A series 630-1200



Model	WP630A	WP800A	WP1000A	WP1200A
Welding range (mm)	315-630	630-800	800-1000	1000-1200
Standard reducers (mm)	315-355-400-450-500	630-710-800(M)	800-900-1000(M)	1000-1100-1200(M)
	-560-630(M)			
Power supply	380V/50Hz, 1PH	380V/50Hz, 3PH	380V/50Hz, 3PH	380V/50Hz, 3PH
Total power	10.1 KW	16.2 KW	24.5 KW	30.5 KW
Heating plate	7.5 KW	12.5 KW	17.5 KW	22.5 KW
Facer	1.5 KW	2.2 KW	3 KW	4 KW
Hydraulic station	1.1 KW	1.5 KW	4 KW	4 KW
Pressure adjusting range	0-10 MPa	0-10 MPa	0-12 MPa	0-12 MPa
Max Temperature	270°C	270°C	270°C	270°C
Temperature Deviation	±7°C	±7°C	±7°C	±7°C
Piston Area	27.1 CM <sup>2</sup>	31.8 CM <sup>2</sup>	36.52 CM <sup>2</sup>	45.94 CM <sup>2</sup>

Welping offers two types of clamp inserts— CoreClamp Steel and CoreClamp Aluminum, designed for FX, Apro and A series butt fusion welding machines, these inserts ensure accurate alignment and secure clamping for high-quality fusion welds

### CoreClamp Steel

Crafted from precision laser-cut steel and welded for superior strength, CoreClamp Steel is built to handle the high clamping forces for large-diameter fusion welding. Equipped with anti-slip serrations inside, the inserts firmly grip the pipe, reducing slippage during alignment and fusion. Non-standard sizes can be custom-made to meet unique project requirements or special pipe dimensions

Available sizes:

630-710-800-900-1100-1200-1400-1600-1800-2000mm

16"-18"-20"-24"-28"-32"-36"-42"-48"-54"-60"

\*Customized sizes upon request



CoreClamp Steel



Standard



CoreClamp Aluminum

Pro

### CoreClamp Aluminum

Made with high-strength aluminum die casting, CoreClamp Aluminum offers a lightweight yet durable solution for large-diameter pipe clamping. It's ideal for field operations requiring easy handling, fast setup, and accurate alignment. The insert features a widened contact surface that provides more stable pipe holding. It's four-piece split-ring design allows for quick assembly and disassembly.

Standard size: 630-710-800-900-1100-1200mm



# Large-size Clamp Inserts



# AI series 2"-14"



Model	WP200AI	WP250AI	WP315AI	WP355AI
Welding range (mm)	2"-6"	2"-8"	3"-10"	3"-14"
Standard reducers (mm)	2"-2.5"-3"-4"-6"	2"-2.5"-3"-4"-6"-8"	3"-4"-6"-8"-10"	3"-4"-6"-8"-10"-12"-14"
Power supply	220V/50Hz, 1PH	220V/50Hz, 1PH	220V/50Hz, 1PH	220V/50Hz, 1PH
Total power	3.95 KW	5.05 KW	5.85 KW	6.35 KW
Heating plate	1.8 KW	2.3 KW	3.1 KW	3.6 KW
Facer	1.4 KW	2.0 KW	2.0 KW	2.0 KW
Hydraulic station	0.75 KW	0.75 KW	0.75 KW	0.75 KW
Pressure adjusting range	0-8 MPa	0-8 MPa	0-8MPa	0-8 MPa
Max Temperature	270°C	270°C	270°C	270°C
Temperature Deviation	±5°C	±5°C	±5°C	±5°C
Piston Area	15.32 CM <sup>2</sup>	11 CM <sup>2</sup>	20.02 CM <sup>2</sup>	20.02 CM <sup>2</sup>

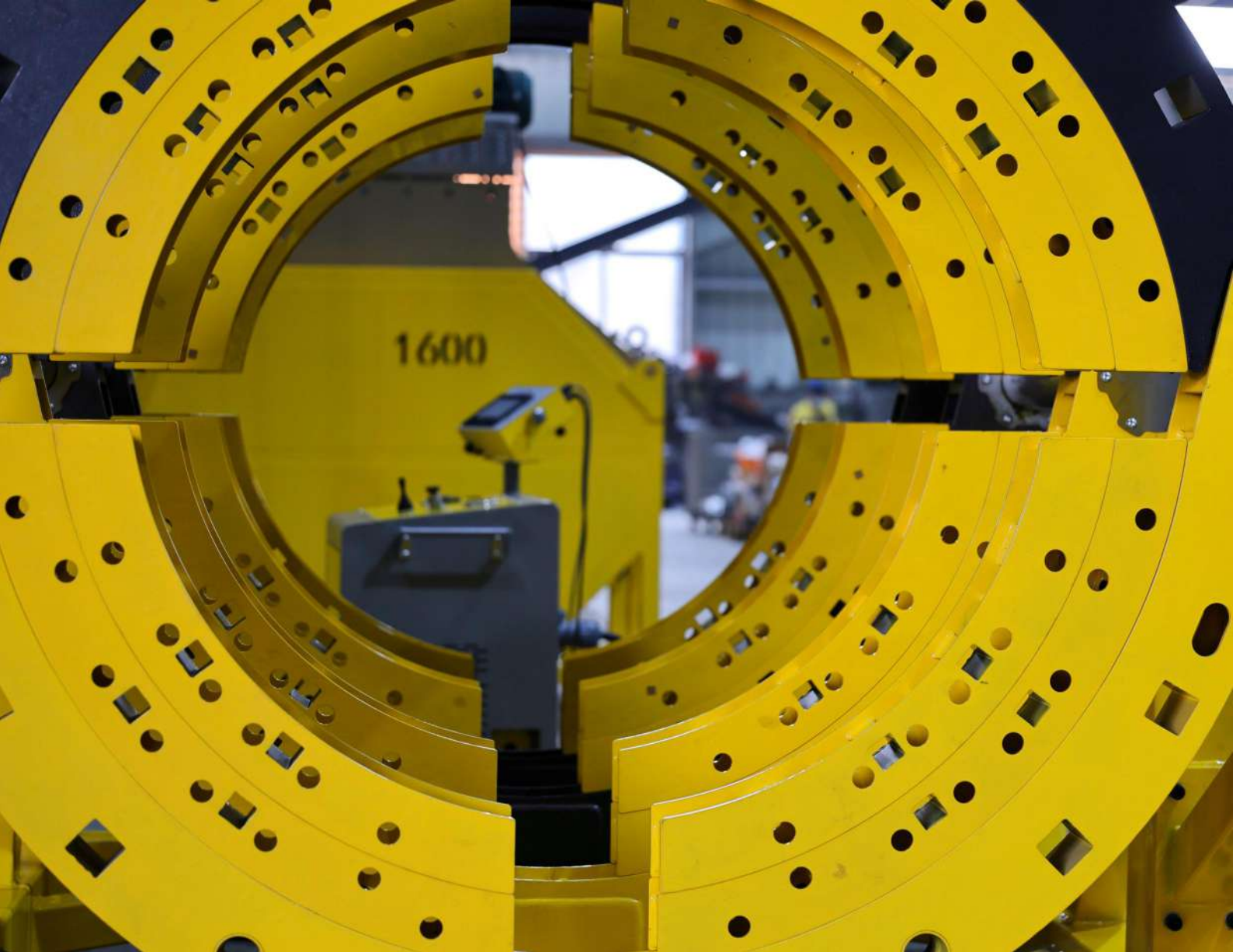




Model	WP500AI	WP630AI	WP1000AI	WP1200AI
Welding range (mm)	8"-18"	16"-24"	26"-36"	28"-48"
Standard reducers (mm)	8"-10"-12"-14"-16"-18"	16"-18"-20"-22"-24"	26"-28"-32"-36"	28"-32"-36"-42"-48"
Power supply	380V/50Hz, 3PH	380V/50Hz, 1PH	380V/50Hz, 3PH	380V/50Hz, 3PH
Total power	9.1 KW	10.1 KW	24.5 KW	30.5 KW
Heating plate	6.5 KW	7.5 KW	17.5 KW	22.5 KW
Facer	1.5 KW	1.5 KW	3 KW	4 KW
Hydraulic station	1.1 KW	1.1 KW	4 KW	4 KW
Pressure adjusting range	0-10 MPa	0-10 MPa	0-12 MPa	0-12 MPa
Max Temperature	270°C	270°C	270°C	270°C
Temperature Deviation	±7°C	±7°C	±7°C	±7°C
Piston Area	22.38 CM <sup>2</sup>	27.1 CM <sup>2</sup>	36.52 CM <sup>2</sup>	45.94 CM <sup>2</sup>



\*Customized sizes upon request



## Hangzhou Welping Machinery Equipment Co., Ltd

Phone: 00 86 571 82603031, 89332538

E-mail: [sales@welping.cn](mailto:sales@welping.cn) , [contact@welping.cn](mailto:contact@welping.cn)

Web: [www.welpingfusion.com](http://www.welpingfusion.com) [www.welpingtool.com](http://www.welpingtool.com)

Office address: Room B301, Chamber of Commerce Building, 185 Jincheng Road,  
Xiaoshan District, Hangzhou, China

Factory address: No. 288 Jinyuan Road, Puyang Town, Xiaoshan District, Hangzhou, China